



The Hon. Kevin Humphries MP
Minister for Mental Health
Minister for Healthy Lifestyles
Minister for Western New South Wales

Lithgow City Council

Scanned

13 FEB 2013

Doc. No.....

GDA Ref.....

Years.....

Clr Maree Statham
Mayor
Lithgow City Council
PO Box 19
LITHGOW NSW 2790

Dear Clr Statham,

NSW 2021 – Regional Action Plans

The NSW Government is determined to deliver the change the people of NSW have called for, to rebuild our State and make NSW number one. We are also committed to giving locals more say in decisions that affect them.

In early 2012, the Premier and Ministers, including myself, led extensive consultations across NSW to listen and understand regional priorities. In response we have prepared *Regional Action Plans* which are the NSW Government's two year local delivery plans.

More than 3,000 community members and stakeholders provided their ideas at 25 community meetings across NSW. In addition, over 500 comments were provided through online and written submissions.

These plans respond to feedback from community members, businesses and other stakeholders and include the plans already prepared for regions by local government and other bodies.

The *Regional Action Plans* set immediate term goals and measurable targets to allow both yourselves and the Government to track progress in delivering these targets.

I am pleased to provide you with a copy of the Central West Regional Action Plan.

If you are after more information please visit www.2021.nsw.gov.au or email regionalcoordinator@dpc.nsw.gov.au.

Yours sincerely,

The HON. KEVIN HUMPHRIES
Minister for Western NSW

CENTRAL WEST

Regional Action Plan



December 2012

©Crown Copyright 2012
Department of Premier and Cabinet
ISBN: 978-0-7313-5447-4

Cover image credit: Hot-air ballooning in Canowindra; Evolving Images,
Destination NSW

Disclaimer

While every reasonable effort has been made to ensure that this document is correct at the time of printing, the State of NSW, its agents and employees, disclaim any and all liability to any person in respect of anything or the consequences of anything done or omitted to be done in reliance or upon the whole or any part of this document.

Copyright Notice

In keeping with the NSW Government's commitment to encourage the availability of information, you are welcome to reproduce the material that appears in the Regional Action Plan for personal, in-house or non-commercial use without formal permission or charge. All other rights reserved. If you wish to reproduce, alter, store or transmit material appearing in the Regional Action Plan for any other purpose, request for formal permission should be directed to the Department of Premier and Cabinet, Regional Coordination Branch, GPO Box 5341, Sydney 2000. You are required to acknowledge that the material is provided by the Regional Action Plan or the owner of the copyright.

REGIONAL MINISTER'S MESSAGE

The NSW Government understands the importance of regional NSW to the sustainability and vitality of the State. Whether it's supporting jobs, delivering services and infrastructure or tackling the costs of living, we are determined to help communities and industries throughout regional NSW reach their potential.

To achieve this, the NSW Government conducted regional forums to hear directly from communities. These forums helped to identify, with each community, what their issues and priorities are and how the NSW Government can assist in delivering on those priorities.

The feedback we received across the Central West will help us plan to rebuild the local economy, return quality services, renovate infrastructure and strengthen our local environment and communities. This Regional Action Plan responds to the feedback by identifying actions to deliver on the priorities highlighted by Central West communities.

The actions in this Regional Action Plan are aligned to NSW 2021, the NSW Government's ten year plan to strengthen the State. Through the Department of Premier and Cabinet I will monitor and track progress against the plan.



The priorities identified by communities within the Central West include:

Diverse, sustainable and innovative economy –

The region will encourage increased investment in mining and other critical industries to create more employment opportunities for local people.

It will be renowned for its education, tertiary and research institutions, and as a place where innovative and high-value businesses and industries are encouraged to establish themselves.

Highly skilled – The community will have increased access to quality education and training that will support existing and new industries. This will provide more opportunities for people, including young people to up-skill and seek new employment opportunities.

Well coordinated and integrated services –

The NSW Government will work with Local Government, Commonwealth Government and the community to deliver effective and integrated human and other essential services to local people.

Well connected – Upgrades to major roads and improvements to critical transport corridors will provide the community and existing and new industries with better access, both within the region and to other surrounding regions.

This Central West Regional Action Plan identifies the immediate actions to deliver on the vision. I thank the local community and businesses, regional organisations and local government for sharing their knowledge and ideas which form the basis of the Plan.

As Minister for Western NSW I will work tirelessly to support the region to grow and prosper through local leadership and strong support from the NSW Government.

*The Hon Kevin Humphries MP
Minister for Western New South Wales*

A NEW APPROACH ACROSS NSW

The NSW Government is fulfilling a new agenda to deliver integrated strategic planning for land use, transport and infrastructure investment, backed up by rigorous financial management and is committed to partnering with communities, including Aboriginal communities to improve social and economic outcomes. The long term strategies will align to NSW 2021, the NSW Government's 10-year business plan to rebuild the economy, return quality services, renovate infrastructure, strengthen our local environment and communities, and restore accountability to Government.

The **State Infrastructure Strategy** is the 20-year strategy to identify and prioritise the delivery of critical public infrastructure that drives productivity and economic growth. The Strategy presents the NSW Government with clear and strategic options for delivering infrastructure and market reform in a way that provides best value for taxpayers.

The **NSW Long Term Transport Master Plan** is the 20-year plan to return quality services through a world class transport system for NSW. It includes clear objectives for transport services and identifies priorities needed to create a transport system that meets a range of needs.

A **New Planning System** is being developed to facilitate NSW being the number one choice for business investment, enable the sustainable growth of our cities and towns as great places to live and ensure that planning and environmental outcomes reflect the expectations of the community.

The **NSW Government's Strategic Regional Land Use Policy** sets out a range of initiatives to better balance growth in the mining and coal seam gas (CSG) industries with the need to protect important agricultural land and water resources. For the first time, the impact of mining or CSG activities on agricultural lands will be taken into consideration before exploration activities are approved. All new exploration activities requiring a Review of Environmental Factors will be required to produce an Agricultural Impact Statement prior to approval.

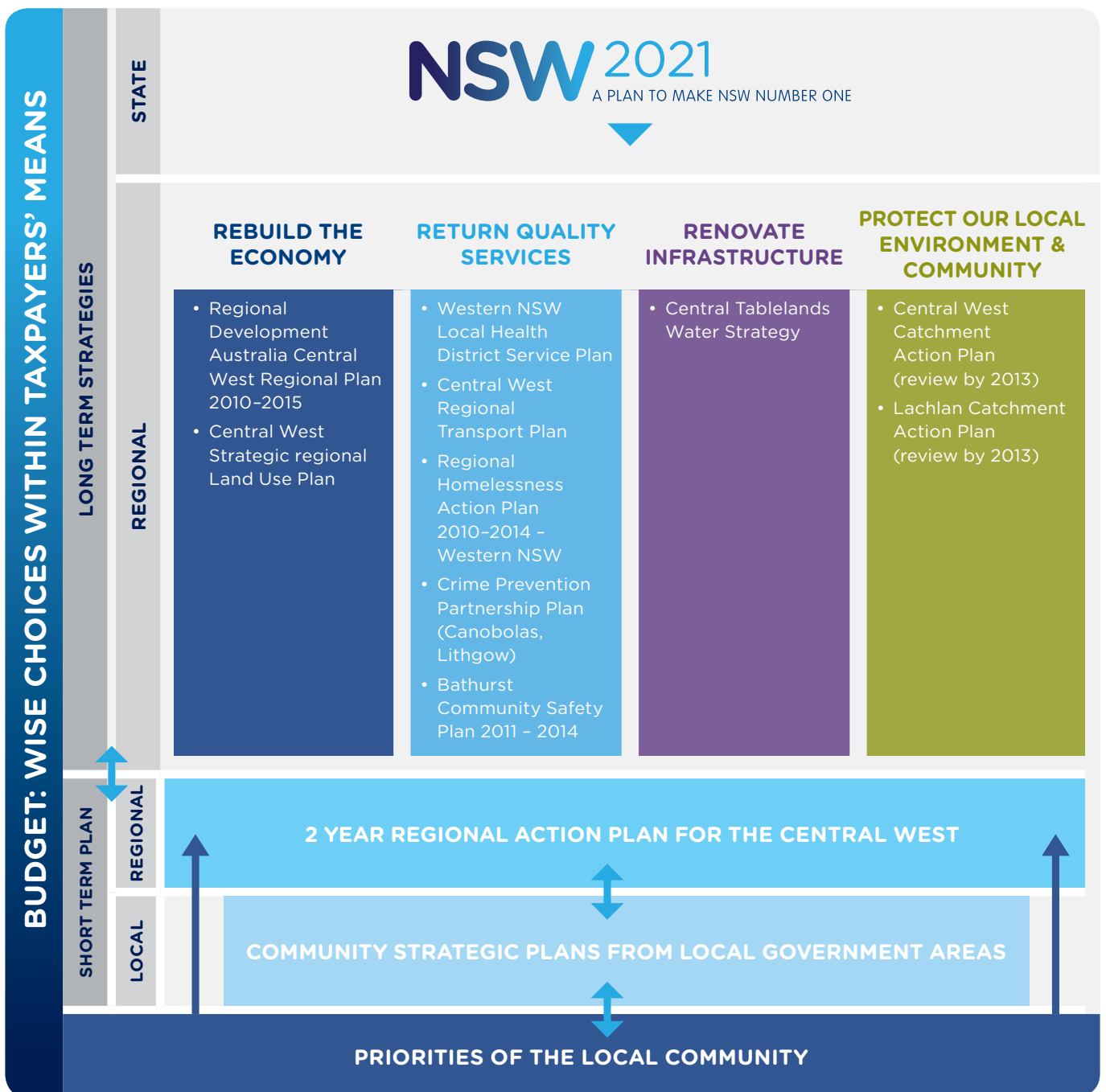
The new **Aboriginal Affairs Strategy** represents the NSW Government's commitment to improving Aboriginal people's social and economic wellbeing. The Strategy is intended to make real differences in the lives and opportunities of Aboriginal people and change the way government works in partnership with Aboriginal communities. Regional Action Plans and the governance supporting the plans, including Aboriginal communities, Regional Leadership Groups and Aboriginal Affairs, will be key in delivering the Strategy locally.

Our progress in implementing the plans will be reported to the community with clear and honest explanations about how we are performing. They will also inform Budget priorities so that we can make the right choices to provide value for money. To sustain our State's finances and maintain our AAA credit rating, we need to identify the community's priorities among competing requests for funding.

CENTRAL WEST

Integrated planning for the Central West

The Central West Regional Action Plan identifies the immediate actions the NSW Government will prioritise. These will complement both the long term strategies being developed for NSW and existing regional strategies outlined below. The unwavering focus on delivery of these plans will ensure we respond to the priorities of local people.



Regional Action Plan

ABOUT OUR REGION

The Central West region is located immediately west of the Greater Sydney metropolitan area over the Great Dividing Range. Offering a unique country lifestyle, the region also boasts a diverse range of industry sectors including agriculture, mining, manufacturing, public administration, education and healthcare.

The region includes the Local Government Areas of the City of Lithgow, Mid Western Regional, Oberon, Bathurst, Blayney, Orange, Cabonne, Cowra, Weddin, Lachlan, Parkes and Forbes.

Regional overview

- Strong manufacturing sector
- Home to an expanding mining sector involving coal, gold and copper
- Strong agricultural sector
- Clean and reliable water catchments
- Quality National Parks.

Competitive advantages

- Extensive freight and commuter road and rail infrastructure
- Rich in natural resources including soils, gold, coal, copper, timber and water supplies
- Close to the major population and market centres of Sydney, Newcastle, Wollongong and Canberra
- One of the most diverse regional economies in NSW
- Strong education and service sectors.



Area
60,456km²



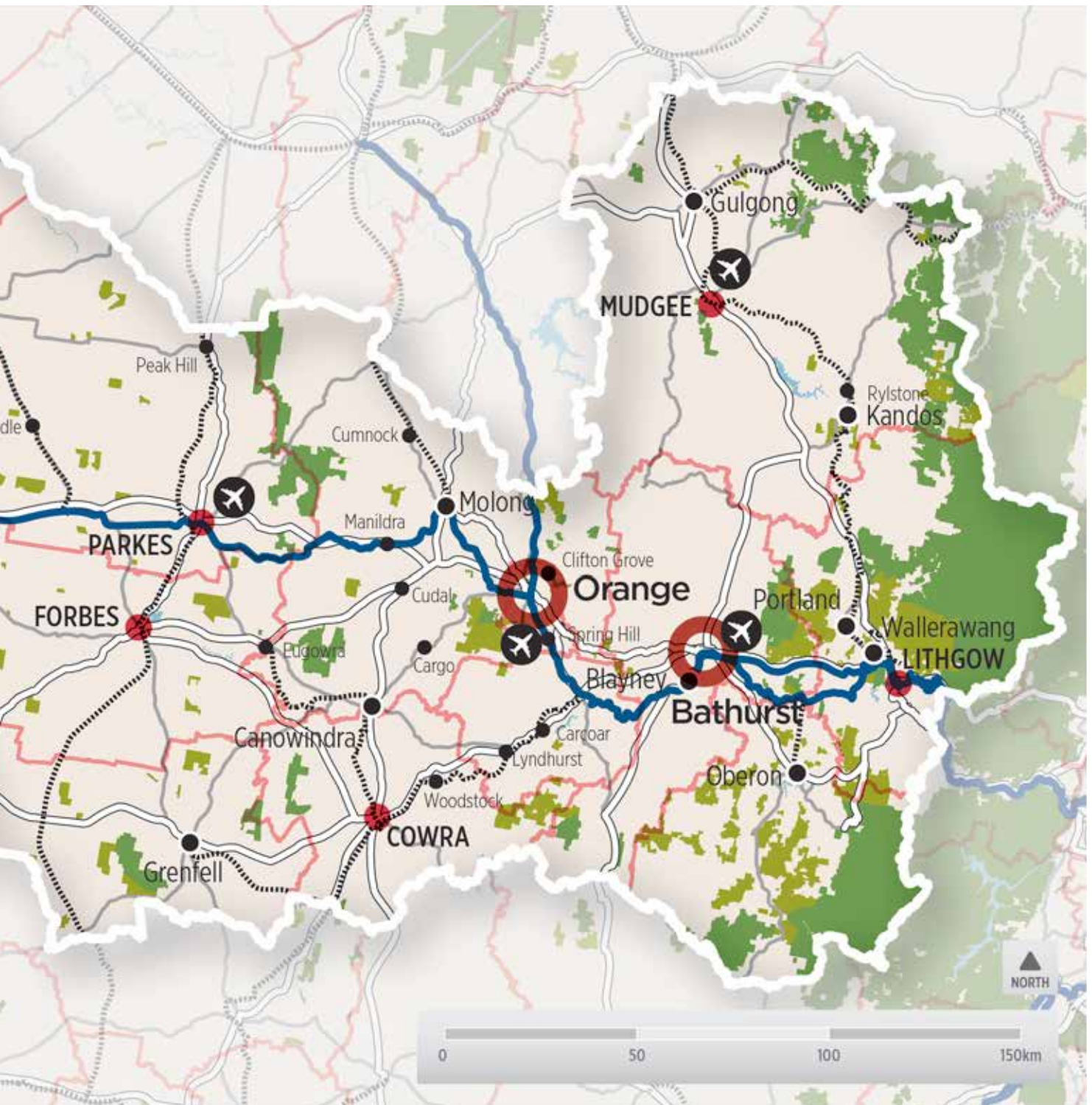
CENTRAL WEST



Population
196,360
(2011) ▶ **205,800**
(2031*)



Housing
84,900
(2011) ▶ **98,000**
(2031*)



*projection

REGIONAL PRIORITIES AND ACTIONS



Support economic growth within the region

The Central West has a strong economy based on primary industries such as agriculture and mining, compared to NSW as a whole. These industries are the foundation of many regional economies and have shaped the development of communities – agricultural, forestry, mining and value adding industries and a large service sector.

The services sector will also need to expand to support the growth of mining and other industries and the expected increase in population.

To support economic growth in the Central West, the NSW Government will:

- Foster growth sectors such as agriculture, tourism, mining and related industries
- Promote the region to attract new residents and businesses
- Continue to build a skilled local workforce
- Balance strong economic growth linked to mining with the protection of agricultural land.

NSW 2021 Goal 3 – Drive economic growth in regional NSW

PRIORITY ACTIONS

Foster growth sectors in the region

NSW Trade and Investment will work with the Central West Regional Development Australia, local businesses and other stakeholders to support businesses and industries in the region that have a competitive advantage and will drive future job growth in agriculture, tourism, mining and related industries.

Industry Action Plans will be implemented to improve growth, resilience, productivity, global competitiveness and investment opportunities in the tourism, manufacturing, professional services, digital economy, and international education and research sectors. The Plans will be implemented in 2013 across NSW, including the Central West, over the next decade.

Lead Agency: NSW Trade & Investment

New Frontiers Program to stimulate mineral and petroleum investment

The New Frontiers Program is an exploration initiative to stimulate mineral and petroleum investment in under-explored areas. It is a successful program that has led to a number of large discoveries in NSW and provides significant benefit to explorers.

A new funding model from July 2012 will raise approximately \$6.5 million annually. Information such as new geophysical, geochemical and mapping data will be provided as a result of this initiative to benefit coal, gold and other mineral exploration activities in the Central West and other regional areas.

Lead Agency: NSW Trade & Investment

Leverage opportunity for the Central West from the growth within the mining sector

The Department of Premier and Cabinet will convene a regional taskforce of leaders from industry, local government and State agencies to report to Government on actions that could maximise the net social and employment benefits from mining growth, focused on housing availability, local skill formation and jobs, and maintenance and improvement of roads and community infrastructure.

Funding from Restart NSW will be investigated as a way to assist regional communities to improve the local infrastructure required to support the growth in population associated with mining.

The Western NSW Taskforce will be established by March 2013 and will report to Government every six months, commencing December 2013.

Lead Agency: Department of Premier and Cabinet

Support primary production in the region and build on competitive advantage

The NSW Government will support primary industries in the region by building on competitive advantage through:

- Building profitable and sustainable cropping, horticulture and livestock industries
- Research and development targeting resource management including improved water efficiency, managing soils, and developing farming systems that sequester carbon
- Protecting our primary industries from pests and disease through surveillance programs and educating communities
- The Rural Support Worker Program to help communities respond to future challenges.

Lead Agency: Department of Primary Industries

Support regional tourism

The NSW Government's response to the Visitor Economy Taskforce Report forms the foundation for regional NSW to contribute to the goal of doubling overnight visitor expenditure by 2020. The Visitor Economy Action Plan will focus on increasing overnight visitor expenditure and promoting cultural aspects and recreational opportunities of regional attractions, such as the wineries of the Orange region.

Funding for existing programs will continue to 30 June 2013, to provide the regional tourism sector with certainty while the Government implements its response to the Taskforce's Report. This includes:

- The Regional Flagship Events Program which provides funding to help market and promote events in regional NSW by offering one-year grants of \$10,000 or grants of \$20,000 each year for three years
- The \$5 million Regional Tourism Product Development Program - the amalgamated Inland organisations (representing New England North West, Outback and Capital Country) receiving \$750,000 through Destination NSW.

Lead Agency: Destination NSW

Regional Action Plan

Provide support to local businesses

Small Biz Connect provides comprehensive, high-quality support and advisory services for small businesses across the State, especially those in regional NSW. There is a strong emphasis on encouraging small businesses to embrace innovation as a means of establishing and sustaining their business as well as improving competitiveness. Tailored face-to-face support for small businesses is provided and there will be an overhaul of the NSW Small Biz Toolkit and an online learning tool will be developed.

The Cabonne Orange and Blayney Business Enterprise Centre will provide services in the Central West. Three people will be employed to assist small businesses in the region.

Lead Agency: NSW Trade & Investment

Promote the region to attract new residents and businesses

The NSW Government provides business support and investment attraction through its regional offices at Orange. These offices work actively with local businesses and other stakeholders toward economic development objectives. This involves delivering a suite of business support programs designed to build business capacity and competitiveness, as well as working with partners such as local governments and business representative bodies to attract new investment in the region.

Programs to make the Central West region more attractive to people wishing to move from the major cities and to attract greater business investment include:

- The Jobs Action Plan, which sets a target of 40,000 new jobs in regional NSW and provides payroll tax discounts to employers who create new positions. In the Central West 75 businesses have registered 588 new positions since 1 July 2011
- A Regional Relocation Grant of \$7,000, which is being offered to encourage individuals and families to move from Sydney to regional NSW. In the Central West 119 grants have been provided, assisting families to relocate to the region
- The Evocities initiative, which seeks to raise awareness of participating regional centres as great places to live and work. Significant funding has been made available by the NSW and Commonwealth Governments to support this local initiative. Private sector sponsors have also provided support
- The NSW Government is also working closely with the Commonwealth Government to attract and target skilled migrants from overseas.

Lead Agency: NSW Trade & Investment, Department of Finance and Services

Build a strong and skilled local workforce

TAFE NSW Western Institute is working with industry and business to identify the region's skills needs and deliver appropriate training to meet specific needs. The Institute will continue to monitor emerging industry trends in the region and identify the future training needs.

A literacy and numeracy Action Group will investigate and address emerging literacy and numeracy skill requirements in trades, mining, health and other industries with a view to implement an Action Plan in the second half of 2013.

Lead Agency: Department of Education and Communities

Undertake effective strategic planning to support economic growth

The NSW Government is developing a Strategic Regional Land Use Plan for the Central West to set out a tailored approach to the specific needs, challenges and opportunities of each region. The Plan will provide the Central West with greater certainty about how the region's resources will be managed in the future and is expected to be finalised in 2013.

The Green Paper on the NSW planning system includes a proposal for development of Regional Growth Plans which would be the principal planning tool for effecting land use change and for the setting of development parameters and criteria within a region. These plans would be integrated with a council's Strategic Community Plan and would inform local land use plans.

Lead Agency: Department of Planning and Infrastructure



Improve regional infrastructure

An important priority for the Central West is to improve its critical infrastructure, in particular roads, logistics and water services to better support the region's economy and the community. Securing the water supply, aged care, housing, education and transport infrastructure have been highlighted by key stakeholders as critical to the future of the region.

An effective partnership between the NSW Government and key stakeholders, including Central NSW Councils (CENTROC) and Central West Regional Development Australia, is required to align infrastructure needs analysis and planning for response.

NSW 2021 Goal 19 – Invest in critical infrastructure

NSW 2021 Goal 21 – Secure potable water supplies

PRIORITY ACTIONS

Plan for future upgrades of the region's roads to cater for increased freight movement to Sydney and other parts of the region

Following the release of the NSW Long Term Transport Master Plan, Regional Transport Plans will be developed for each region of NSW, including the Central West. These Plans will be guided by the strategies advanced in the Long Term Transport Master Plan, integrated with local land use planning initiatives and developed in consultation with local communities, local councils and key stakeholders. It is intended that this approach will ensure that the unique requirements of each region are carefully considered and that transport planning initiatives can be individually tailored and prioritised to reflect the areas' priorities.

The development of the Regional Transport Plans will utilise the outcomes from the Regional Forums and submissions to the Long Term Transport Master Plan, as well as ongoing community engagement to identify strategic directions for the development and operation of integrated passenger transport systems in NSW.

Transport for NSW will develop Regional Transport Plans progressively.

Lead Agency: [Transport for NSW](#)

Deliver road upgrades to the Great Western Highway

The upgrade of the Great Western Highway in the Blue Mountains will complete widening of the highway to four lanes between Emu Plains and Katoomba. Current work on the Great Western Highway includes detailed planning to complete the four-lane upgrade at Bullaburra, and construction of four-lane upgrades at Bullaburra West, Lawson and Woodford to Hazelbrook.

In 2012-13 major milestones are expected on the upgrade of the highway to four lanes east of Katoomba with the completion of projects at Lawson later in 2013.

The contract to build the final stage of the four lane upgrade at Bullaburra, east of Katoomba, is scheduled to awarded this year.

Lead Agency: [Transport for NSW](#)

Widening the Great Western Highway at Kelso

The NSW Government has allocated \$4 million in the 2012-13 Budget to continue planning for the future upgrade of a section of the Great Western Highway at Kelso. The 2.4 kilometre project will extend from west of Stockland Drive intersection to east of Ashworth Drive. The project will widen the highway to four lanes, improve intersections and separate opposing directions of traffic. The detailed design phase has commenced and will be completed by the end of 2013.

Lead Agency: [Transport for NSW](#)

Regional Action Plan

Improve Freight Productivity in Regional NSW

Under the Bridges for the Bush program, the NSW Government is committing significant capital investment towards the upgrade of a number of rural bridges.

This will provide the largest incremental benefit to freight productivity in the short term by allowing Higher Mass Limit vehicles and long combination vehicles such as B-Triples to use more rural bridges.

\$41 million will be directed to the Central West Region to replace Higher Mass Limit deficient bridges at the following critical locations:

- Holman Bridge – Timber Truss replacement bridge over the Lachlan River, Namina Road, Gooloogong
- Warroo – Timber Truss Bridge upgrade over the Lachlan River, Warroo Bridge Road, Warroo
- McKanes Bridge – Timber Truss Bridge upgrade over the Cox River, McKanes Falls Road, Hartley.

This investment will support a number of specific industries and supply chains within the region, including cotton, mine site supplies, livestock (cattle and sheep), fuel and fast moving consumer goods.

Lead Agency: Transport for NSW

Bells Line of Road Long Term Strategic Corridor Plan

The NSW and Commonwealth Governments are currently completing a long term strategic plan for the Bells Line of Road corridor that will address future transport requirements and development pressures, particularly in the North West sector of Sydney.

The Plan will guide the development and reservation of a road corridor for future upgrade works along Bells Line of Road. It will also identify short, medium and long-term activities for the development of the Bells Line of Road corridor and recommend a timeframe for the implementation of these activities.

Lead Agency: Transport for NSW

Improve water security for the region

The Country Town Water Supply and Sewerage Program will provide local water utilities with access to funding under established criteria. The Rylstone Dam Safety upgrade is an approved project under the Program. The Local Council is responsible for developing the project, in consultation with NSW Office of Water, and will determine the timing of the project.

Technical and funding support has been provided to the Lake Rowlands upgrade process, as part of the Central Tablelands Water Strategy and for an updated yield study for Lake Rowlands. The NSW Government will continue to work with local government owners of the asset to support the upgrade.

Other projects being delivered to improve water security and sewerage systems in the Central West include:

- \$18.2 million for the construction of the Macquarie River to Orange water supply pipeline (subject to planning approval) to secure water supplies for Orange
- \$5 million for the construction of the Mudgee sewerage project
- \$930,000 for the completion of the Wallerawang sewerage project
- \$7 million for the construction of the Wyangala sewerage project.

The NSW Government is advocating on behalf of rural communities in negotiations on the Commonwealth's Basin Plan and is implementing water savings projects funded by the Commonwealth to offset the reductions in diversion required under the Commonwealth's Basin Plan.

Lead Agency: Department of Primary Industries

Funding local infrastructure

The NSW Local Infrastructure Renewal Scheme assists local councils to fund the maintenance and renewal of existing infrastructure by subsidising interest costs to make it affordable to take out loans to fund projects. Projects funded subject to a satisfactory financial assessment of the Council by TCorp in the Central West in Round One include:

- Replace and repair timber bridges at Blayney securing transport links for the community, and ensuring the safe movement of people and agricultural products to market (subject to approval of Blayney Shire Council's special variation application to IPART)
- Upgrade water and sewerage systems in the Cabonne Shire Council. The project involves the provision of a low pressure reticulated sewerage system for the villages of Cudal, Manildra, Yeoval and Cumnock
- Refurbishment works on three regional swimming pool facilities at Mudgee, Gulgong and Kandos
- Upgrade the Parkes Shire Council Swimming Pool.

Lead Agency: Division of Local Government – Department Premier and Cabinet

The Commonwealth Government's Regional Development Australia Fund is funding two projects in the Central West as part of Round Two including:

- \$4.9 million in partnership funding for the Orange Airport expansion, which will extend the main runway, upgrade taxiways and large aircraft parking areas and expand the terminal building at Orange Airport. The project is being delivered by Orange City Council and will be complete by May 2014. Increased access to mine sites will increase employment opportunities in the region
- \$2.3 million in partnership funding for the Mount Panorama infrastructure upgrade, which will resurface the Mount Panorama race track, install disabled access to Harris Park, beautify the entrance to the area, and replace the key safety wall in Conrod Straight. The project is being delivered by Bathurst City Council and will strengthen and grow the local economy through increased employment, increased tourism and improved business activity.

Lead Agency: Regional Development Australia

Regional Action Plan



Support Aboriginal people and communities to develop and implement effective governance structures

Aboriginal people in the Central West are requesting respectful partnerships and engagement practices by Government and service providers. Support for effective initiatives is required to foster strong resilient Aboriginal communities throughout the region.

NSW 2021 Goal 26 - Fostering opportunity and partnership with Aboriginal people

PRIORITY ACTIONS

Support Aboriginal community governance

The NSW Government is committed to supporting Aboriginal communities to improve governance arrangements. Through the NSW Ministerial Taskforce on Aboriginal Affairs (MTAA) the government is working in partnership with the Aboriginal community and the Coalition of Aboriginal Peak Organisations (CAPO) to develop improved models of local decision making and coordination.

Lead Agency: Department of Education and Communities



Improve education and training opportunities for young people

Supporting children and young people to achieve at school is the key to opening up a range of further education, training and employment options. Local employment opportunities encourage young people to stay in the region and underpin improvements across a range of areas including housing, health and community strength.

There are opportunities for employment growth as a result of the emerging industries within the region. Identification of emerging skills needs and targeted training will be required to meet growing employment demand and to make sure local people are able to take advantage of new job opportunities.

NSW 2021 Goal 6 – Strengthen the NSW skill base

NSW 2021 Goal 15 – Improve education and learning outcomes for all students

PRIORITY ACTIONS

Keeping young people in remote areas involved in education

An outreach model is being developed which represents a partnership between a distance education centre, the local school and local community organisations to work with students who are at risk of or who have disengaged from school. A partnership with the Police Citizens Youth Centres and the Commonwealth Department of Education Employment and Workplace Relations' Youth Transitions program is being developed to facilitate this model.

Western Region Department of Education and Communities is working in partnership with Regional Development Australia to investigate establishing a mining, agriculture and health initiative with industry and education providers to ensure student exposure and strong linkages with expanding regional industries throughout 2012–2013.

Lead Agency: Department of Education and Communities

Promote apprenticeship and traineeship opportunities to local businesses

TAFE NSW will work with local industries and businesses to encourage employers to participate in the program and provide young people with more opportunities to develop industry recognised skills while they are still at school.

Western Region Department of Education and Communities is developing a program to support students to access industry based experiences including virtual tours of industries such as engineering through V8 racing cars and mining. The program will provide travel and accommodation where required.

Lead Agency: Department of Education and Communities

Upgrade education infrastructure

The NSW Government is investing in upgrades to education infrastructure in the Central West including:

- A campus upgrade and a new gym are being built at Denison College of Secondary Education, Bathurst High Campus with construction expected to be completed by June 2015
- Work is continuing on a new Aboriginal Training Centre at Orange TAFE with construction expected to be completed by 2013.

Lead Agency: Department of Education and Communities

Regional Action Plan



Provide integrated and coordinated health and human services and improve community safety

The delivery of better integrated and coordinated human services is an important priority for the region. Some communities experience higher levels of disadvantage and homelessness, and have difficulty accessing housing and healthcare including mental health, regional specialists and dental services.

Services must address the needs of remote communities, people with a disability, and youth and families in need. Initiatives to improve community safety are also required.

Agreement on service need and service response is a key requirement and strong partnerships with local government will be essential to deliver integrated and coordinated services.

NSW 2021 Goal 12 - Provide world class clinical services with timely access and effective infrastructure

NSW 2021 Goal 13 - Better protect the most vulnerable members of our community and break the cycle of disadvantage

NSW 2021 Goal 14 - Increase opportunities for people with a disability by providing supports that meet their individual needs and realise their potential

PRIORITY ACTIONS

Upgrade critical health infrastructure

The NSW Government is investing in health infrastructure to improve access to health services in the Central West including:

- Expansion of radiotherapy services for patients living with cancer in Western NSW with \$1.5 million from the 2012-13 NSW Budget for the Central West Radiation Oncology Treatment Centre at Orange to support the operation of the second linear accelerator
- \$2.3 million for the upgrade and redevelopment of Forbes and Parkes Hospitals
- \$3.4 million for cyclical maintenance at Orange Base Hospital
- A further \$5.9 million recurrent funding for the continued staged opening of the Orange Mental Health Service
- \$6 million secured for the redevelopment of the Peak Hill Hospital to a Multipurpose Health Service (MPS), with an estimated total cost of \$12 million
- \$5 million committed for the construction of a Multipurpose service at Gulgong with an estimated total cost of \$7 million
- Redevelopment of the Orange Aboriginal Health Service through funding provided by the Commonwealth Department of Health and Ageing.

Lead Agency: NSW Ministry of Health

Build a strong health workforce

The Western NSW Local Health District will develop a strategy to attract, recruit and retain staff. The strategy will be completed in 2013, and will include support relocation incentives, advertising, marketing materials and attendance at Expos.

The Allied Health Assistance Initiative commenced in Western NSW Local Health District in April 2011 with the appointment of a project officer for a period of two years. The aim of the project is to attract more allied health assistants. Successful enhancement of the Allied Health Assistant workforce will lead to the provision of services that better meet community needs, and improved retention of professional staff due to a reduction in workload pressures.

Lead Agency: Western NSW Local Health District

Improve access to specialist health services

Services provided to rural health in the Western NSW Local Health District will be enhanced by expanding the use of Telehealth as part of service delivery. Telehealth capacity is being enhanced through equipment installed over the last six months at Bathurst, Parkes, Gulgong, Rylstone, Molong, Blayney and Mudgee. The enhancement of the Telehealth as an integral part of services across the Western NSW Local Health District is ongoing, to support an increase in the frequency of use and usage across a growing range of services.

Lead Agency: Western NSW Local Health District

Provide more support for people with a disability

The focus of Stronger Together Two is to ensure that people with a disability and their families are at the forefront of decision making about their lives. The NSW Government is strongly committed to a more person centred approach, with the introduction of individualised funding by 1 July 2014. Extensive consultations have been undertaken with communities (Living Life My Way) to get the input of the community on the delivery of this commitment.

Stronger Together Two will also deliver greater collaboration with the non government organisation sector, mainstream services and the community. This includes a continued shift to prevention and early assistance and more efficient service delivery to get the maximum benefit from this investment.

The Central West region will benefit from these reforms and has been allocated a total of approximately \$68.4 million for disability services in 2012-13. This funding covers a range of disability and community care services including accommodation support, respite, post school programs, day programs and family and community support.

Further funds have been allocated across the region to cover new accommodation capital works in Orange, Bathurst, Parkes, and to fund the redevelopment of the Riverside Large Residential Centre in Orange.

Lead Agency: Department of Family and Community Services

Better protect the most vulnerable members of our community and break the cycle of disadvantage

Housing NSW is implementing the NSW Homelessness Action Plan (HAP) the blueprint for our prevention and early intervention approach to reduce homelessness in NSW. Between 2009 and 2014, HAP aims to achieve state-wide service reform through more than 100 projects, including 40 funded under the National Partnership Agreement on Homelessness (NPAH).

Housing NSW is leading a program of reform to strengthen and improve the specialist homelessness service system – Going Home Staying Home. A key objective of this reform is to ensure that clients receive the right assistance at the right time in the right place and are far less likely to require assistance again. The reform will be supported with industry and workforce development strategies and funding as well as an innovation fund.

The Intensive Case Management Support for Single Men with Complex Needs program is a HAP funded project operating in the Central West region. This project aims to provide integrated and intensive case management support for single men with mental health and/or drug and alcohol issues to exit specialist homelessness services into long term accommodation with sustained support, and has a focus on Aboriginal men. The project also includes a prevention and early intervention component.

Lead Agency: Department of Family and Community Services

Reduce crime and improve community safety

The NSW Government is delivering a range of initiatives to reduce crime and improve community safety including:

- Establishing the 'Eyewatch' program to bring neighbourhood watch online. Using Facebook, NSW Police Force Local Area Commands create forums for community engagement and participation with police activities. Eyewatch is operational in the Canobolas, Chifley and Lachlan Local Area Commands
- Supporting further high visibility policing and crime prevention activities by employing an additional 859 police officers across the State between March 2011 and August 2015
- Providing nearly \$13 million to construct a new police station in Parkes. The new station is currently under construction and is due for completion in mid 2013
- Supporting local councils to implement crime prevention initiatives under the Safer Community Compacts (SCC) Program. The program enables local councils to develop crime prevention plans, with the assistance of the Department of Attorney General and Justice for approval by the Attorney General as an SCC. Once the plans are approved by the Attorney General as an SCC, the Local Council may apply for grant funding to implement crime prevention actions under the plan. As part of its SCC, the City of Lithgow received \$50,000 for its "Get Home Safely" program.

Lead Agency: NSW Police Force, Department of Attorney General and Justice

Improve awareness and participation in Work and Development Orders

Work and Development Orders (WDOs) allow vulnerable people to clear outstanding fines debt through unpaid work, vocational, educational or life skills courses and medical or mental health treatment programs. People are eligible for a WDO if they have a mental illness, intellectual disability, cognitive impairment, are homeless, have a serious addiction or who are experiencing acute economic hardship. WDOs are sponsored by approved not for profit organisations, government agencies or health practitioners. Non government organisations and Department of Attorney General and Justice agencies in Bathurst, Cowra, Forbes, Lithgow, Orange and Parkes are participating in the WDO scheme.

Lead Agency: Department of Attorney General and Justice

Regional Action Plan

IMPLEMENTATION

PRIORITY 1

Support economic growth within the region

Actions	Delivery Lead	Delivery Partners	Timeframe
Develop a strategy to foster growth sectors in the region	NSW Trade & Investment	Central West RDA	2013
Implement the Industry Action Plans	NSW Trade & Investment	Commonwealth Government, local councils, Industry Associations and Community Organisations Industry	Implementation in 2013 over the next 10 years
Deliver the New Frontiers Program to stimulate mineral and petroleum investment	NSW Trade & Investment	Industry	Ongoing
Convene a regional taskforce of leaders to report to Government on actions that could maximise the net social and employment benefits from mining growth	Department of Premier and Cabinet	Industry, local councils and NSW Government agencies	March 2013
Support primary production in the region and build on competitive advantage	Department of Primary Industries	Livestock Health and Pest Associations and Catchment Management Authorities	Ongoing
Support regional tourism	Destination NSW		Implementation in 2013 over the next 10 years
Rollout the Small Biz connect program	Small Business Commissioner	NSW Trade & Investment	Ongoing
Attract people to the region through delivery of the: <ul style="list-style-type: none"> • Jobs Action Plan • Regional Relocation Grants • Evocities Initiative • Regional Sponsored Migration Scheme 	Department of Finance and Services	Commonwealth Government, NSW Trade & Investment	Ongoing
Build a strong and skilled local workforce and develop a Central West Regional Skills and Education Plan which considers projects from the Central West, Skills and Industry forum	Department of Education and Communities	NSW Trade & Investment, Central West RDA	
Develop and implement a Strategic Regional Land Use Plan for the Central West	Department Planning and Infrastructure	NSW Trade & Investment	2013

PRIORITY 2

Improve regional infrastructure

Actions	Delivery Lead	Delivery Partners	Timeframe
Central West Regional Transport Plan	Transport for NSW		Following the release of the NSW Long Term Transport Master Plan
Plan for the future upgrades of the region's roads to cater for increased freight movement to Sydney and other parts of the region	Transport for NSW	Roads and Maritime Services	The NSW Freight and Ports Strategy released mid 2013
Deliver road upgrades to the Great Western Highway	Transport for NSW	Commonwealth Department of Infrastructure and Transport	Four lanes between Emu Plains and Katoomba by 2015 Safety improvements between Katoomba and Lithgow by 2016
Widening the Great Western Highway at Kelso	Transport for NSW	Roads and Maritime Services	Detailed design complete 2013
Bells Line of Road Long Term Strategic Corridor Plan	Transport for NSW	Commonwealth Department of Infrastructure and Transport	March 2013
Improve water security	Office of Water - Department of Primary Industries	Orange City Council	Construction of pipeline from Macquarie River to supply Orange completed by April 2014 subject to DoPI approval
Provide support to primary industries to improve water efficiency ahead of the Murray Darling Basin Plan implementation	Office of Water - Department of Primary Industries		2012-17
Provide funding to local councils in the region under the NSW Local Infrastructure Renewal Scheme	Division of Local Government - Department Premier and Cabinet	Local councils	Various

Regional Action Plan

PRIORITY 3

Support Aboriginal people and communities to develop and implement effective governance structures

Actions	Delivery Lead	Delivery Partners	Timeframe
Support Aboriginal community governance	Department of Education and Communities		The Ministerial Taskforce on Aboriginal Affairs will report to Government by March 2013

PRIORITY 4

Improve education and training opportunities for young people

Actions	Delivery Lead	Delivery Partners	Timeframe
Keeping young people in remote areas involved in education	Department of Education and Communities	PCYC and Department of Education Employment and Workplace Relations' Youth Transitions	TBA
Promote apprenticeship and traineeship opportunities to local businesses	Department of Education and Communities	NSW TAFE Western Institute	Ongoing
Upgrade education infrastructure	Department of Education and Communities	NSW TAFE Western Institute	Ongoing

PRIORITY 5

Provide integrated and coordinated health and human services and improve community safety

Actions	Delivery Lead	Delivery Partners	Timeframe
Upgrade critical health infrastructure - Central West Radiation Oncology Treatment Centre	Western NSW Local Health District		2013
Upgrade the Forbes and Parkes Hospitals	Western NSW Local Health District	Health Infrastructure, TSA Management	Detailed planning in progress September 2012 and ongoing
Peak Hill MPS Redevelopment	Western NSW Local Health District	Health Infrastructure, Public Works	Construction completion proposed early 2015
Gulgong MPS Redevelopment	Western NSW Local Health District	Health Infrastructure, Public Works	Construction completion November 2013
Cyclical maintenance at Orange Base hospital	Western NSW Local Health District		Ongoing maintenance
Deliver improvements to the Orange Mental Health Services	Western NSW Local Health District		Ongoing staged opening
Deliver improvements to the Orange Aboriginal Health Service	Western NSW Local Health District	Commonwealth Department of Health and Ageing	Ongoing
Build a strong health workforce - Development of a Workforce Strategy	Western NSW Local Health District		March 2013
Improve access to specialist health services - Enhancement of Telehealth Program	Western NSW Local Health District		In progress and ongoing
Provide more support for people with a disability through the development of person centred approaches under Stronger Together Two	Department of Family and Community Services		June 2016
Implement the Regional Homelessness Action Plan	Department of Family and Community Services		2014
Reduce crime and improve community safety through: <ul style="list-style-type: none"> • Project Eyewatch • Extra Police • Parkes Police Station 	NSW Police Force		Ongoing August 2015 2013
Deliver the Safer Community Compact program	Department of Attorney General and Justice	Local councils	Ongoing
Improve awareness and participation in Work and Development Orders	Department of Attorney General and Justice		2012-Ongoing

Regional Action Plan

CENTRAL WEST



CONTACT DETAILS:

**Regional Coordination Branch
Department of Premier and Cabinet**

T (02) 9228 5555

E regionalcoordination@dpc.nsw.gov.au

Level 39
Governor Macquarie Tower
1 Farrer Place
Sydney NSW 2000

www.2021.nsw.gov.au