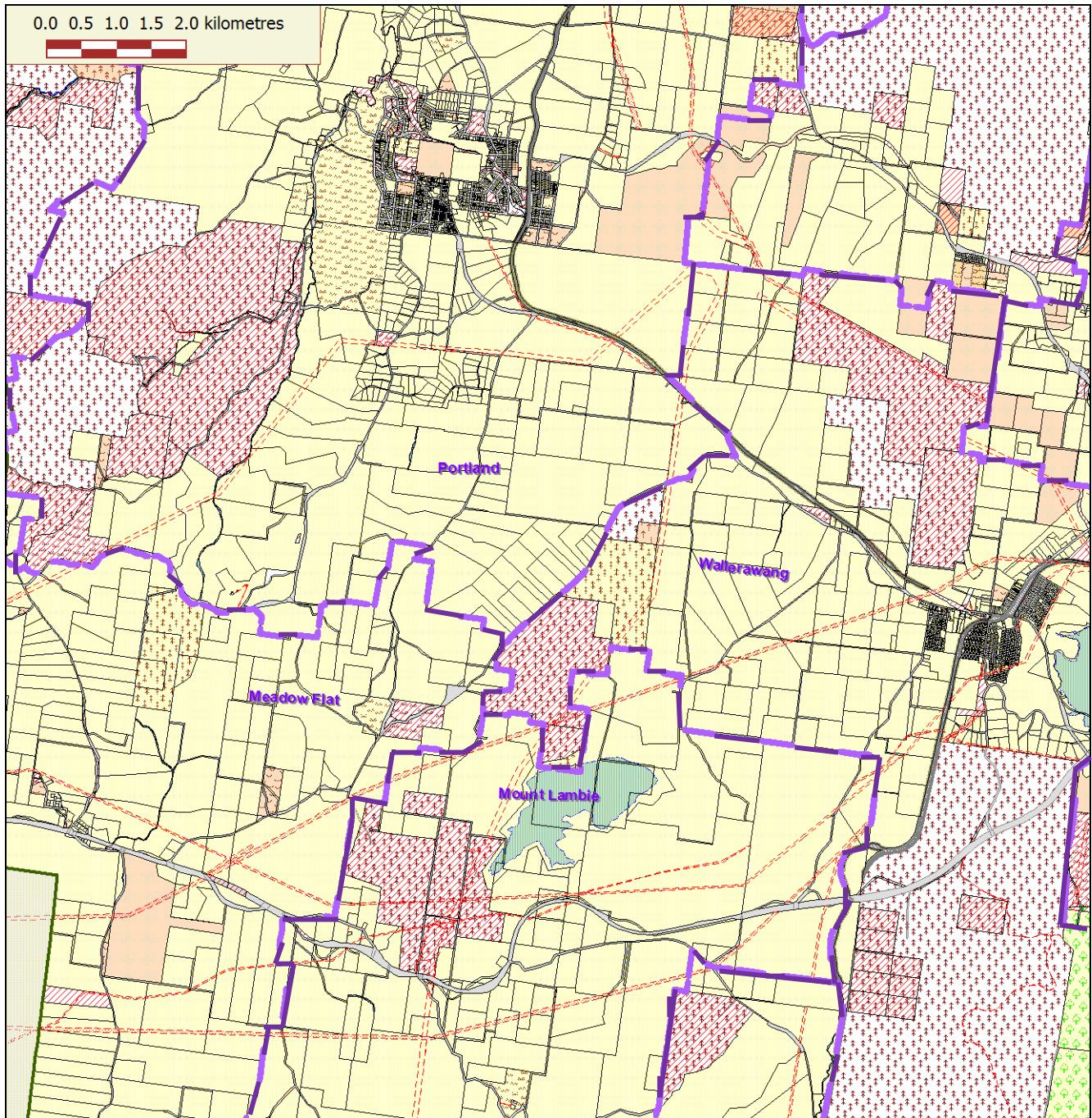


## Attachment 1- Existing Locality Boundaries



Map Scale: 1:87,910 Map Zoom: 15.36 km

### Info Results

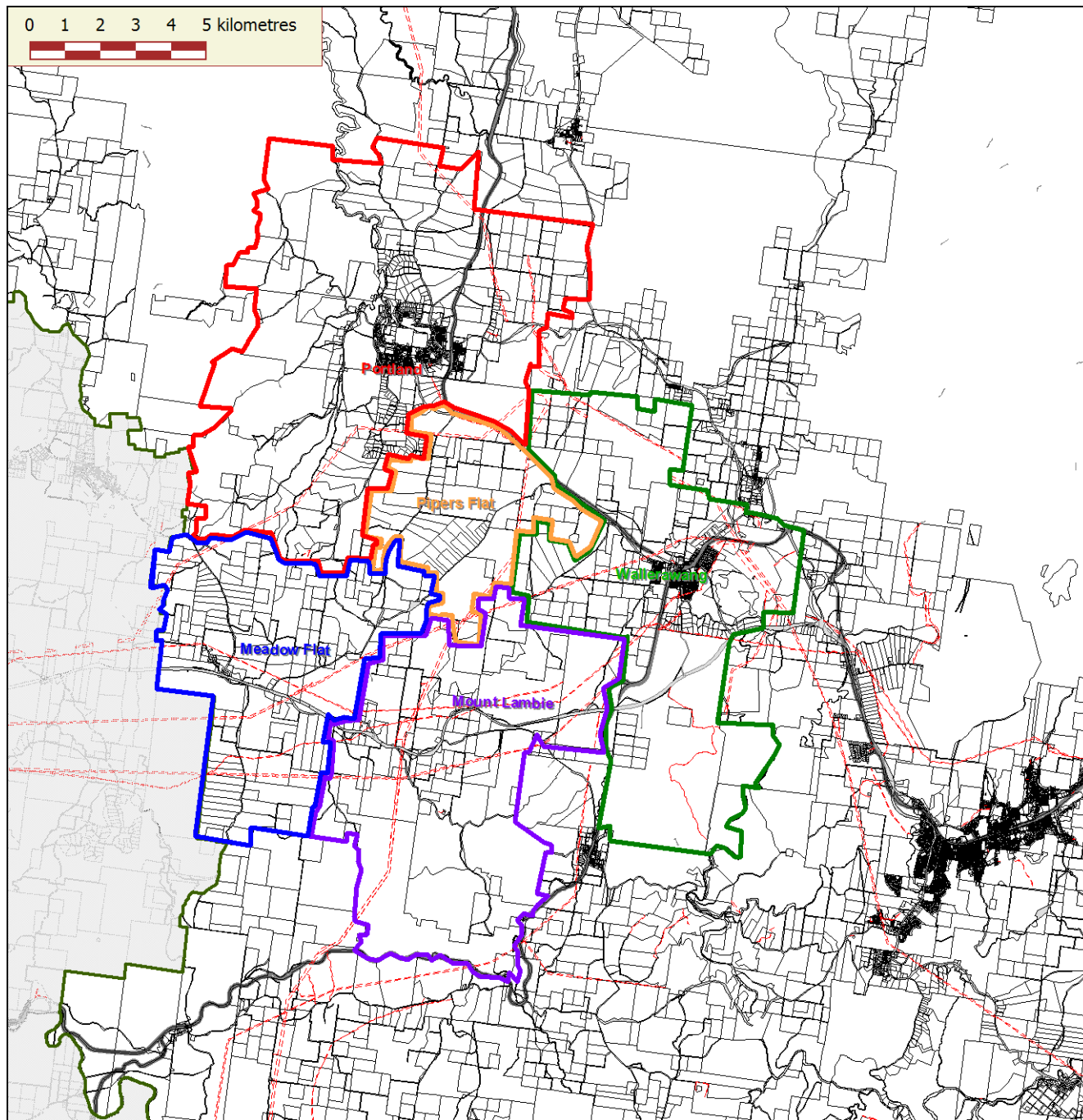
There are no features selected with textual information.



#### Disclaimer

This map has been created for the purpose of showing basic locality information over Lithgow City Council. Any error should be reported to the GIS Section, Lithgow City Council. This map is a representation of the information currently held by Lithgow City Council. While every effort has been made to ensure the accuracy of the product, Council accepts no responsibility for any errors or omissions. Any feedback on omissions or errors would be appreciated.

## Attachment 2- Proposed Pipers Flat Locality Boundary



Map Scale: 1:174,900 Map Zoom: 30.56 km



### Disclaimer

This map has been created for the purpose of showing basic locality information over Lithgow City Council. Any error should be reported to the GIS Section, Lithgow City Council. This map is a representation of the information currently held by Lithgow City Council. While every effort has been made to ensure the accuracy of the product, Council accepts no responsibility for any errors or omissions. Any feedback on omissions or errors would be appreciated.