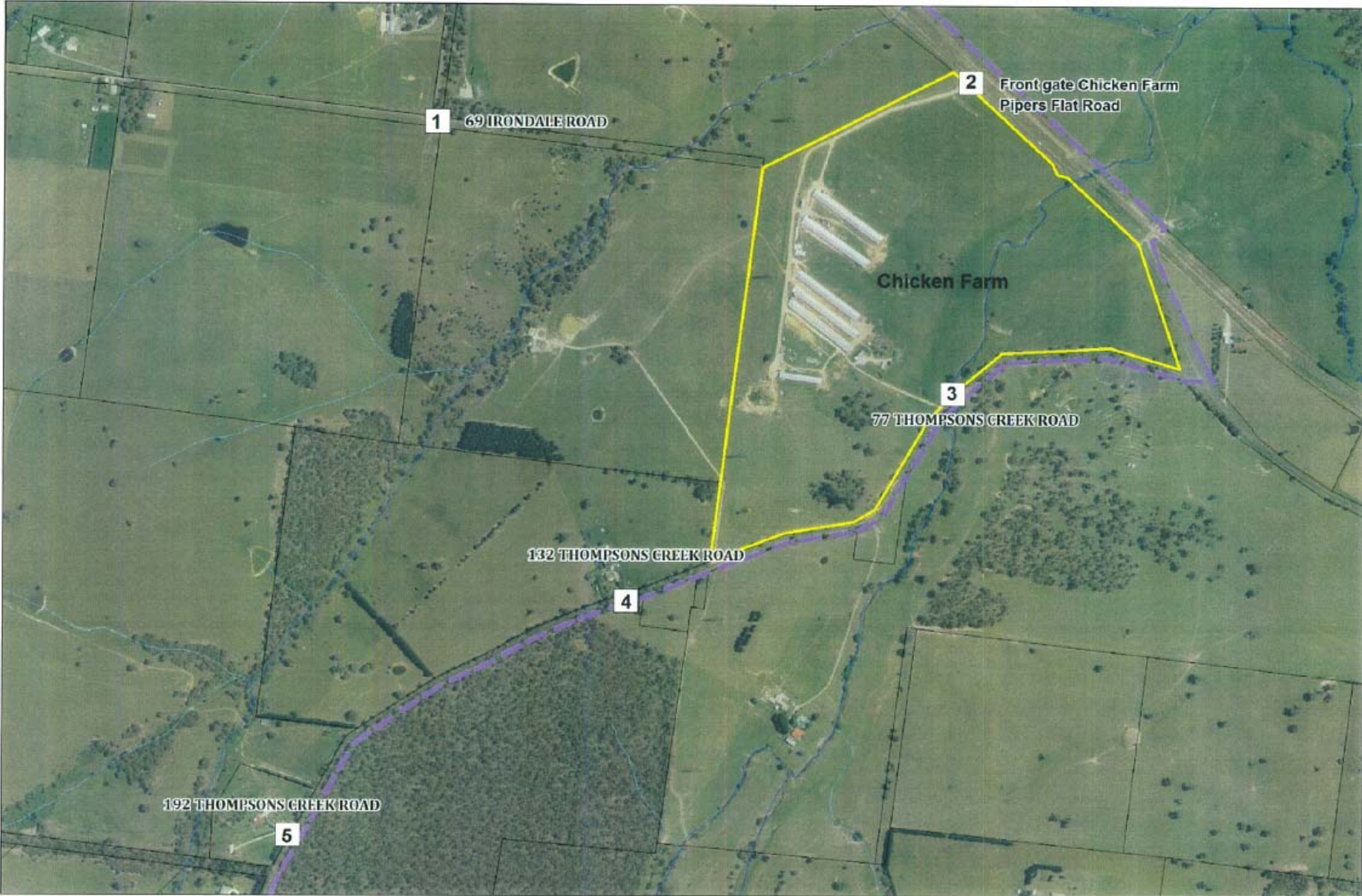


Attachment 1 – Site Map of Chicken farm and Odour Investigation Area



## Attachment 2 – Odour Intensity Scale

Level	Descriptor
0	Odour Not Detectable
1	Odour present in the air, which activates the sense of smell and the characteristics may or may not be distinguished and/or definite, but not objectionable in short durations. This is characterized by occasional "whiffs" of odour, but is not persistent.
2	Odour present in the air, which easily activates the sense of smell, is very distinct and clearly distinguishable, tends to be objectionable and/or irritating, and is persistent in the community.
3	<b>Odour present in the air, which is objectionable and causes a person to attempt to avoid it completely.</b>
4	<b>Odour present in the air, which is so strong that it is overpowering and intolerable.</b>