



Senator the Hon Fiona Nash
Minister for Regional Development
Minister for Local Government and Territories
Minister for Regional Communications
Deputy Leader of The Nationals

Reference: NSRF300278

- 7 OCT 2016

Mr Roger Bailey
General Manager
City of Lithgow Council
PO Box 19
LITHGOW NSW 2790

Dear Mr Bailey

**NATIONAL STRONGER REGIONS FUND ROUND THREE – LITHGOW BLAST FURNACE
PARK FACILITIES PROJECT – NSRF300278**

I am writing to confirm the Government has approved funding of up to \$545,050 (GST exclusive) to the City of Lithgow Council for the Lithgow Blast Furnace Park Facilities project under the National Stronger Regions Fund (NSRF) Round Three.

The Government is committed to supporting local communities to prosper and grow. Local infrastructure projects like the Lithgow Blast Furnace Park Facilities are critical to boost economic growth and improve local amenities and facilities.

The NSRF is administered by the Department of Infrastructure and Regional Development and a departmental officer will contact you shortly to discuss the next steps. This includes undertaking any final due diligence and preparing a Deed of Agreement.

Whilst this letter confirms the Government's commitment to your project I recommend that you do not enter into financial commitments or begin any construction work on the project until a Deed of Agreement has been signed with the Government.

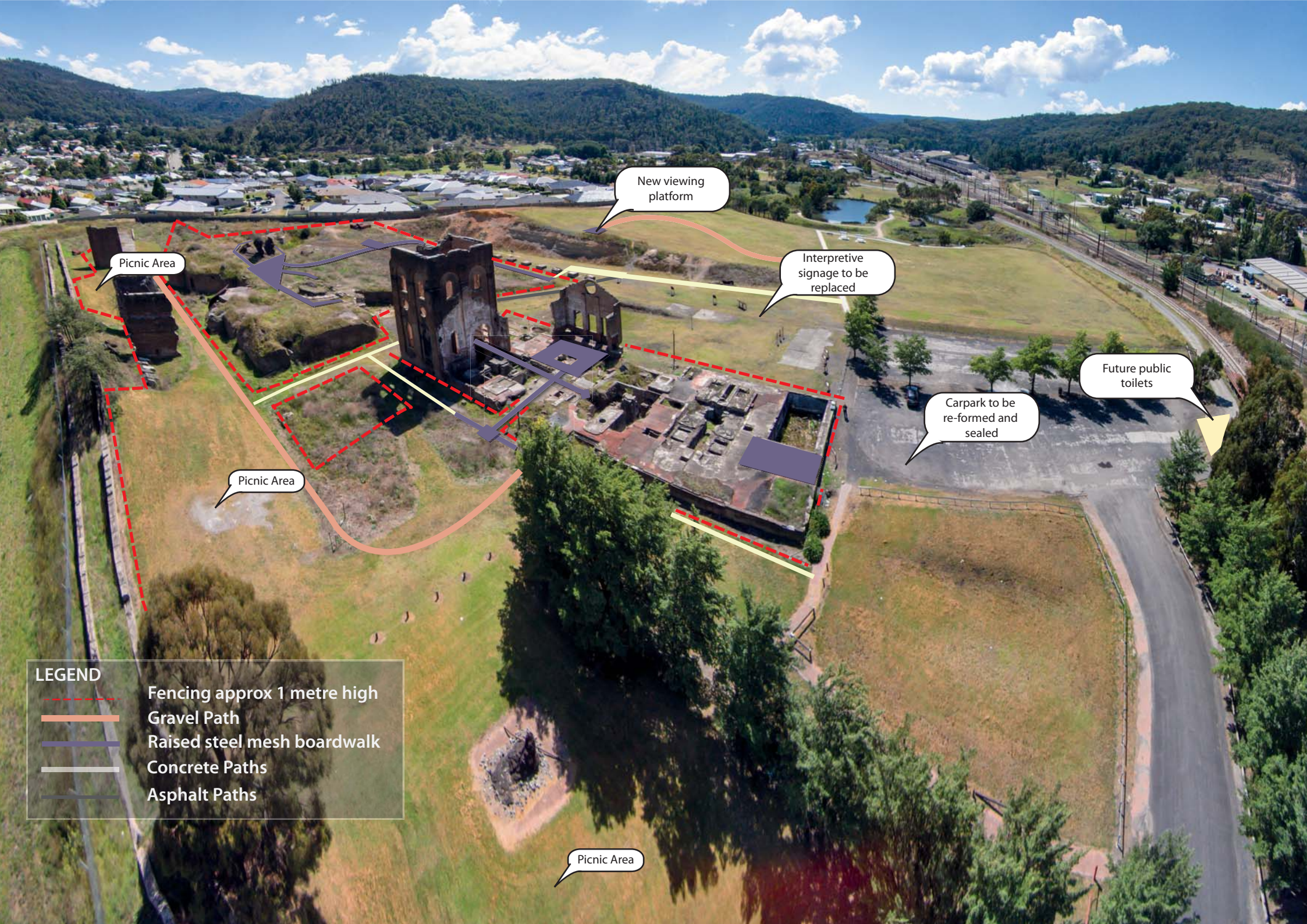
Should you arrange a project launch, sod-turn or an event at any stage, please contact the Department on eventbriefings@infrastructure.gov.au to arrange a suitable date.

Please provide notice of your event and three possible dates at least six weeks prior to the earliest date, so I can do my best to make arrangements to attend your event. If I am unavailable, I will organise a representative to attend on behalf of the Federal Government and my Department will liaise directly with you.

I wish you every success and look forward to seeing the project completed.

Yours sincerely

FIONA NASH



New viewing platform

Interpretive signage to be replaced

Picnic Area

Future public toilets

Carpark to be re-formed and sealed

Picnic Area

Picnic Area

LEGEND

- Fencing approx 1 metre high
- Gravel Path
- Raised steel mesh boardwalk
- Concrete Paths
- Asphalt Paths