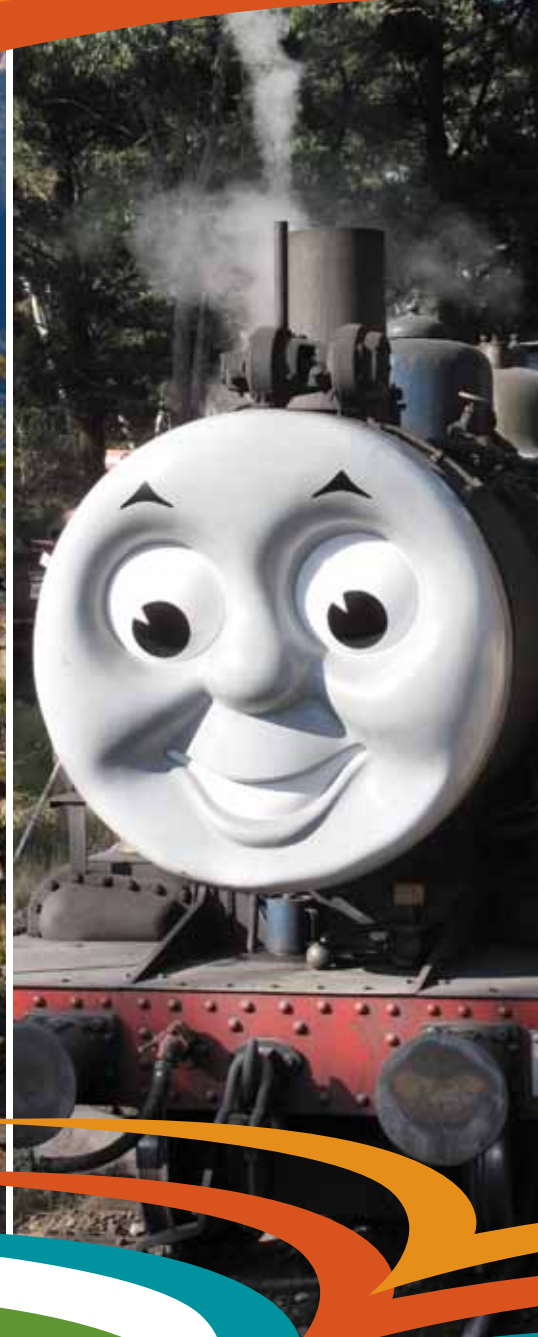


Lithgow

Surprisingly Diverse



Proudly supported
by Tourism NSW



EASY TO GET TO.
IMPOSSIBLE
TO FORGET.

www.tourism.lithgow.com

Surprisingly close

Hassans Walls

CONTENTS

So easy to reach	2
Regional map	3
Make yourself at home	4
Surprisingly festive	6
Events calendar	8
Creatively speaking	10
Surprisingly Interesting	12
Aboriginal heritage	12
Journeys through time	14
Surprisingly spectacular	16
National parks & forests	18
Scenic drives	20
Regional drives	22
Surprisingly exciting	24
Outdoor adventure	26
Surprisingly accommodating	28
Kick back, relax	30
Advertisers	32
Town maps	46
Bushwalking and 4WD trails	48
Information Directory	49

Look a little bit closer. Lithgow is set to surprise you.

On the western fringe of the Blue Mountains, just two hours from Sydney and at the gateway to the Central West, the Lithgow area is the perfect getaway.

Within minutes of the city itself, you can be walking through historic villages, visiting spectacular lookouts, sitting beside clear flowing creeks or discovering the many beautiful valleys that dominate the region.

You'll be surprised at the range of things there are to do in the Lithgow area and the wide choice of places to stay – from six star with all the frills to camping with all the thrills.

Best known for its industrial heritage, Lithgow is also an exquisitely beautiful area boasting six national parks and rare flora and fauna.

Explore the Capertee Valley and Mudgee to the north, Jenolan Caves and Oberon to the south, Bathurst to the west and the Blue Mountains and Sydney to the east.

But most of all, stay a few days and explore the Lithgow area itself.

It's surprisingly close, surprisingly interesting and surprisingly spectacular...we look forward to making you feel welcome.

Close to the Blue Mountains and Jenolan Caves...

close to Mudgee and Orange

Capertee Valley

surprisingly diverse
two hours from Sydney and Orange
spectacular valleys and views
historic towns and villages

Scenic lookouts and walks

Hassans Walls Lookout is just minutes from Lithgow's town centre. With its majestic 180 degree views of mountain escarpments and rolling valleys it is just one of the many scenic vantage points in the Lithgow area.

www.tourism.lithgow.com

The Lithgow area is part of the Blue Mountains, Lithgow and Oberon Tourism Region which combined provides an extraordinary range of adventure, nature-based, cultural and relaxation experiences.



So easy to reach

Just two hours from Sydney and Goulburn and even less from Orange and Mudgee, Lithgow is surprisingly close and easy to get to. Set at the crossroads of five major highways heading north, south, east and west, Lithgow is a popular meeting place between the Central West, the Blue Mountains and Sydney. This also makes Lithgow a perfect place to stay when enjoying the touring routes of the Greater Blue Mountains Drive, Botanists Way and the Tablelands Way Experience.

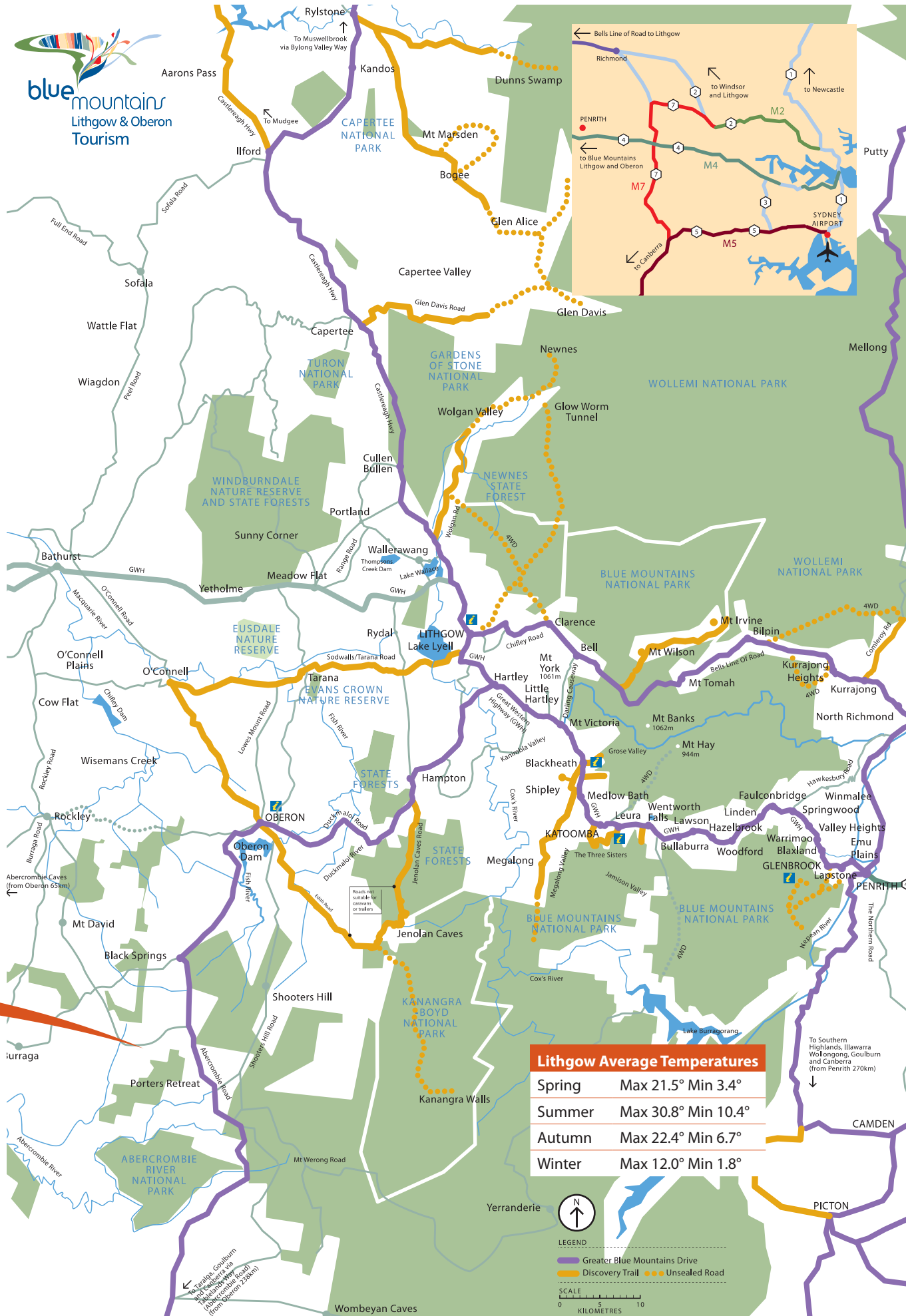
CityRail trains travel directly from Sydney's Central Railway Station, via the scenic Blue Mountains, in just under three hours, or via the XPT on the western lines from Dubbo. Country Link buses meet and drop off at Lithgow Railway Station. Private tour operators also provide transfers and customised services.

Our staff at the Lithgow Visitor Centre will happily assist you with travel advice and suggestions.

TO LITHGOW	TRAVEL TIME	ROUTE
SYDNEY AND BLUE MOUNTAINS		
Sydney City (Central)	2 hrs 20 mins	M4 & Great Western Hwy or M2, Windsor & Bells Line of Road
Sydney Airport	2 hrs 20 mins	M5, M7 & Great Western Hwy
Katoomba	35 mins	Great Western Hwy
Penrith	1 hr 30 mins	Great Western Hwy
Windsor	1 hr 30 mins	Bells Line of Road (Botanists Way)
HUNTER VALLEY		
Singleton	3 hrs	Comleroy Road & Bells Line of Road
Muswellbrook	3 hrs	Castlereagh Hwy, Rylstone & Bylong Valley Way
FROM THE SOUTH		
Canberra	3 hrs 15 mins	Tablelands Way via Oberon
Oberon	45 mins	Tablelands Way
Jenolan Caves	45 mins	Jenolan Caves Road
CENTRAL WEST		
Bathurst	45 mins	Great Western Hwy
Mudgee	1 hr 20 mins	Castlereagh Hwy
Dubbo	3 hrs	Castlereagh Hwy via Mudgee or Great Western Hwy via Orange
RAIL		
Sydney Central	3 hrs	Blue Mountains Line
Katoomba	50 mins	Blue Mountains Line
Dubbo	4 hrs	Country Link – XPT service

From every direction...all roads lead to Lithgow!





Lithgow Average Temperatures

Spring	Max 21.5° Min 3.4°
Summer	Max 30.8° Min 10.4°
Autumn	Max 22.4° Min 6.7°
Winter	Max 12.0° Min 1.8°

To Southern Highlands, Illawarra Wollongong, Goulburn and Canberra (from Penrith 270km)



LEGEND
 Greater Blue Mountains Drive
 Discovery Trail
 Unsealed Road



Make yourself at home

Meet the locals and get the lie of the land

Vibrant and creative communities, relaxed rural lifestyles, great opportunities for adventure, and well serviced towns and villages are what the Lithgow area is known for today. Most importantly, no matter where you go, or what you do, you will find the locals very welcoming.



Wallerawang & Rydal

There are many heritage towns and villages to explore such as Wallerawang (above) and Rydal (right). No matter where you go, or what you do, you will find the locals welcoming.

GET YOUR BEARINGS

Lithgow

The town of Lithgow is nestled in a picturesque valley on the western slopes of the Blue Mountains and is surrounded by nature reserves and national parks. 20,000 people live in the Lithgow area and the town itself has a population of around 14,000 who enjoy all the facilities and services of a modern rural town. Lithgow has an extraordinary industrial heritage. Take some time to explore the town before heading further afield.

Wallerawang

Built to service the railway, coal mines and Wallerawang Power Station (one of the oldest in NSW), Wallerawang is now a bustling town of 2000 people. Wallerawang has local shopping amenities, a range of sporting facilities and you can enjoy a number of water sports at Lake Wallace.

Portland

Home of the former Portland cement works, Portland now offers a warm and welcoming community of 2000 people who are actively promoting the town's

heritage and the benefits of living in a small community. Check out the calendar of events – you may catch a local festival or art show.



Smaller villages

There are numerous villages throughout the area. All offer relaxed residential lifestyles while some also have a range of shopping, accommodation and dining opportunities. Explore the area and you'll be sure to receive a warm welcome.

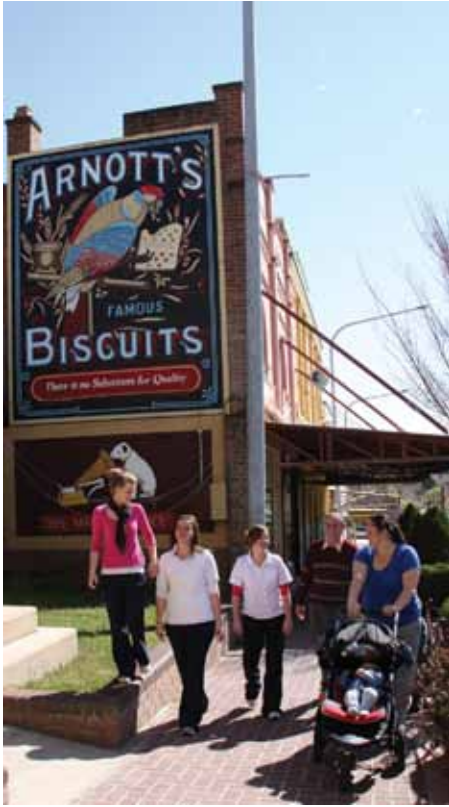
Rural communities

Spread throughout the scenic rolling hills and spectacular valleys that are a feature of the Lithgow area, many people enjoy relaxed rural lifestyles whether involved directly in farming or in small home based businesses. Pack a picnic, or go on an adventure, and enjoy the many touring routes throughout the area.





You will be welcomed and will find all you need in any one of the many businesses that service the Lithgow area.



Portland

A community supported project called 'Signs of Yesteryear' saw the painting of many murals that enhance the town of Portland, which along with the former cement works, makes it an interesting town to explore.



Lithgow
Lithgow, itself, has many quality facilities and services that you can enjoy.

ENJOY WHAT'S ON OFFER

You'll be surprised and delighted at the range of shopping and dining options in the Lithgow area.

Shopping

Explore our shops and you'll discover that the Lithgow area has a lot to offer when it comes to shopping. Why not get a group of friends together and make a day of it. You could throw in a little pampering on the side too.

Eating out

Good food is an integral part of any great holiday and you'll find a wide range of places to choose from in the Lithgow area. There are tea rooms in towns and villages, restaurants and cafes, pubs, clubs and motels, and many places to buy quality food should you wish to cater for yourself.

Relax and meet the locals in one of the many cafes and restaurants.

